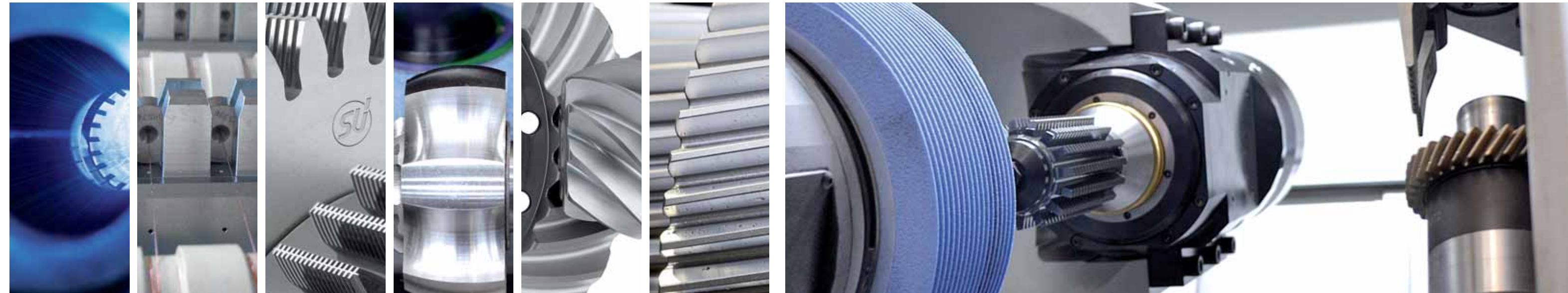
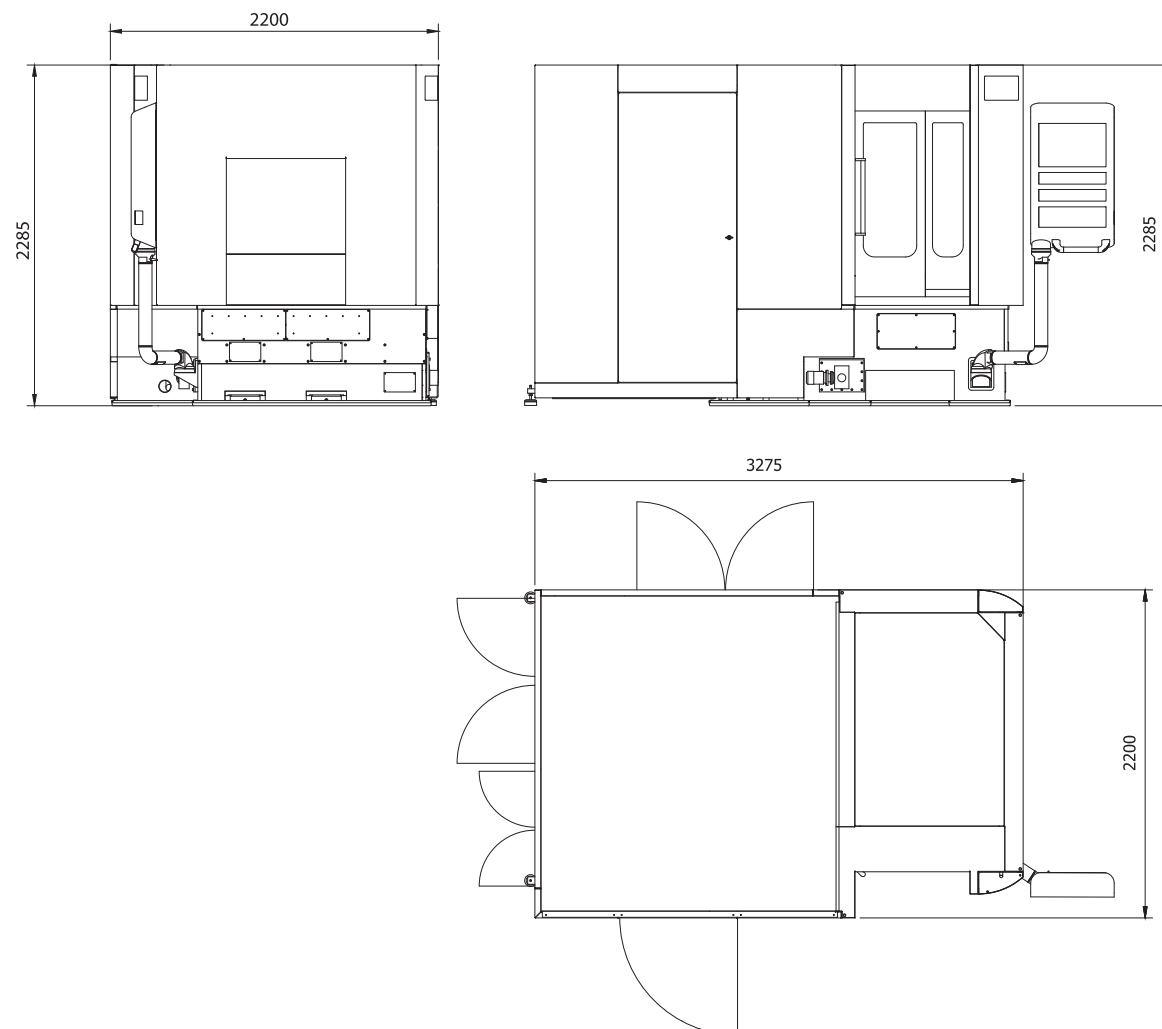


Technical data

Workpiece diameter, max.	mm	160
Module range	m _n	1.0 - 3.0
Workpiece length, max.	mm	300
Face width, max.	mm	180
Helix angle degree		+95°/ -45°
Grinding wheel dia.	mm	250 max 210 min
Grinding wheel width	mm	100
Grinding speed, max.	m/s	80
Dressing tool dia.	mm	123
Machine dimensions L x W x H	mm	3,275 x 2,200 x 2,285
Controls Siemens		Sinumerik 840 D sl



SAMP S.p.A.
Via Saliceto, 15
40010 Bentivoglio (BO)
Italy
Tel.: +39 (051) 63 19 411
Fax: +39 (051) 37 08 60
info@sampspa.com

Star SU LLC
5200 Prairie Stone Parkway, Suite 100
Hoffman Estates, IL 60192
USA
Tel.: +1 (847) 649 1450
Fax: +1 (847) 649 0112
sales@star-su.com

Star SU International Trading (Shanghai) Co. Ltd.
Shenxia Road, 358 Shanghai Forward High
Tech Zone, Jiading District,
201818 Shanghai - P.R. China
Tel.: +86 21 59900890
Fax: +86 21 59900887
tool-assistant@star-su.com.cn

Samputensili Beijing
Room 1801/1802, Jing Tai Tower,
No. C24 Jian Guo Men Wai Avenue,
100022 Beijing - P.R. China
Tel.: +86 10 6515 6349 - 6515 6350
Fax: +86 10 6515 7150
beijing@star-su.com.cn

Star SU Industria de Ferramentas Ltda.
Rod. Dom Gabriel Paulino
Bueno Couto Km 66,3 - C.P. 849
CEP13201 - 970 Jundiá, SP, Brazil
Tel.: +55 (011) 21 36 5199
Fax: +55 (011) 4582 7921
brasil@star-su.com.br

SU Korea Co. Ltd.
4 MA-319 Sihwa Industrial Complex
703-12, Sung-Gok Dong An-San City
Kyungki-Do, Rep. of Korea
Tel.: +82 (031) 497 18 11
Fax: +82 (031) 497 18 15
sambutensili@naver.com

Samputensili GmbH
Märtenberger Str. 17
09125 Chemnitz
Germany
Tel.: +49 (0371) 576 257
Fax: +49 (0371) 576 259
contact@sambutensili.com

Samputensili France S.a.r.l.
79 rue de la Tour
42000 Saint Etienne Cedex
France
Tel.: +33 (0477) 92 80 50
Fax: +33 (0477) 93 72 03
info@sambutensili.fr

Samputensili Equipment & Tools Pvt. Ltd.
246/4, Hinjewadi Gaon, Tal. Mulshi,
411057 Pune
India
Tel.: +91 9764911726
d.aradhye@sambutensili.it

Discover the new SG 160 Sky Grind: a ground-breaking concept for the dry grinding of gears!

The challenge

It is known that when grinding most of the heat is transferred into the workpiece. Reducing friction, discharging the heat and evacuating the chips are the primary technological tasks for the oil-based lubricant. However, the equipment dedicated to the oil treatment (tanks, high-pressure pumps, filtration unit, etc.) absorb 75% of the total energy consumed by a grinding machine, require a massive amount of space and significantly contribute to the costs of investment and maintenance of grinding machines.



Our solution

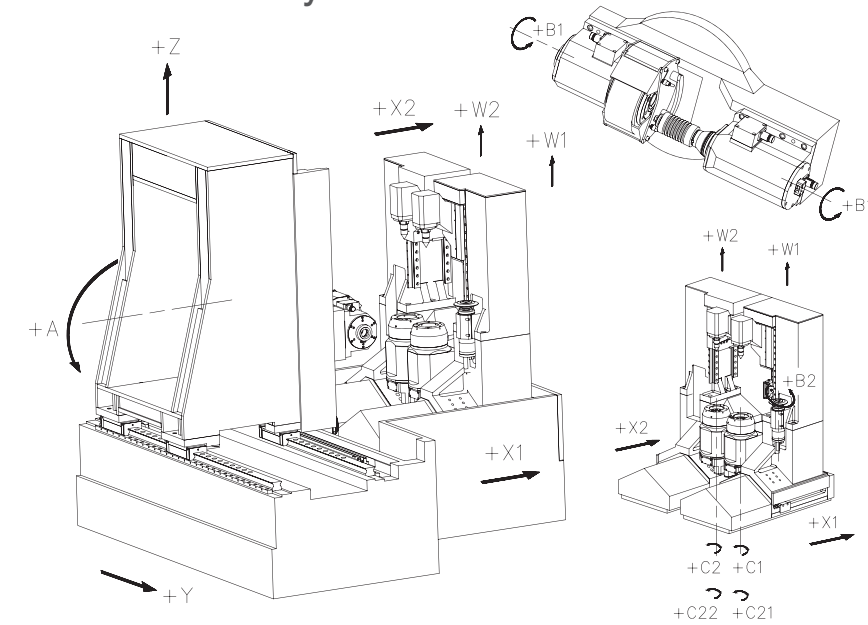
The SG 160 removes most of the stock allowance with the first pass using a hobbing tool, which has the advantage of not heating the workpiece excessively. Subsequently, with the second finishing pass, a grinding wheel removes the remaining stock without causing problems of overheating the workpiece, therefore resulting in a completely dry process.

Your advantage

Moreover, its innovative structure with two spindles actuated by linear motors simultaneously ensure a time of chip-to-chip of less than 2 seconds. The final result is an amazingly productive machine, even faster than traditional dual table grinding

machines, characterized by a very small footprint and a lower cost of investment for auxiliary equipment. More importantly, by totally eliminating the need for cutting oils, the machine is extremely environmental friendly, both towards ecosystems and towards our most valuable resource: the health of working people.

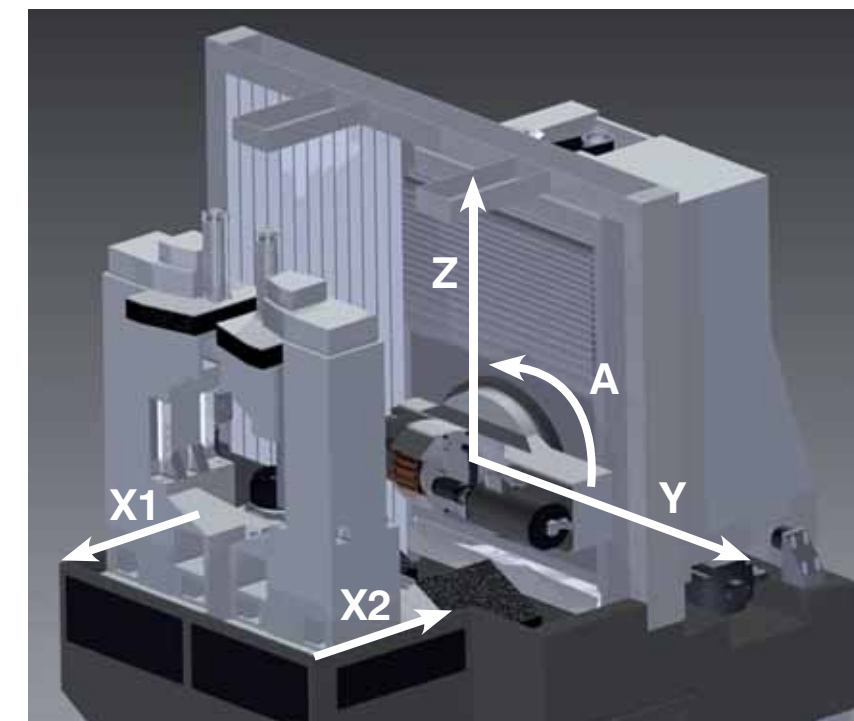
SG 160 axis layout



The SG 160 splits the X-axis of traditional machines into two linear slides (X1, X2), each of which carries one workpiece spindle. In this way both workspindles are under full position control any time.

Being driven by high dynamic 30 m/s linear motors, changing spindles comes down to less than 2 seconds including simultaneous repositioning of the tools with the Y-Z-A axes.

- Y Tangential movement axis
- Z Axial movement axis
- X1 Radial movement axis
- X2 Radial movement axis
- A Head tool holder tilt axis
- B1 Spindle grinding wheel tool holder rotation axis
- B11 Spindle skiving hobbing tool holder rotation axis (dry version)
- C1 1 workpiece spindle rotation axis
- C2 2 workpiece spindle rotation axis
- W1 1 tailstock movement
- W2 2 tailstock movement
- C21 1 rotary carter
- C22 2 rotary carter



Ultra fast part change

X1
Retract Work spindle slide

X2
Infeed Work spindle slide

Y, Z, A
Change tool positions from grinding to hobbing

All done simultaneously in less than 2 seconds!

Machine highlights

Based on a very rigid and unique machine architecture, the SG 160 Sky Grind is the first dry grinding machine for high productivity industries.

- + Chip-to-chip time less than 2 sec.
- + Innovative and patent-pending machine architecture
- + Dual workpiece spindles: one for skive-hobbing, one for generating grinding
- + New virtual Y-axis configuration for high dynamic stiffness
- + High thermal and mechanical stability



Significant reduction in:

- + cost of consumables
- + total investment
- + machine footprint

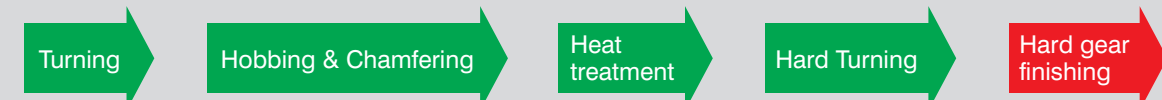
Significant improvement of:

- + work health
- + environmental impact

The new SG 160 ensures cycle times for the finishing of gears that are perfectly in line with the automotive industry, at a lower cost compared to traditional manufacturing solutions.

Gear Production is finally turning in "Green" in 2015

State of the art



Now it's possible!

